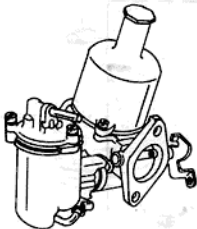


# INSTRUCTION SHEET

## S. U. CARBURETORS TYPE HS



### DISASSEMBLY

USE EXPLODED VIEW ON REVERSE SIDE AS A GUIDE. THE NUMERICAL SEQUENCE MAY GENERALLY BE FOLLOWED TO DISASSEMBLE UNIT FAR ENOUGH TO PERMIT CLEANING AND INSPECTION. ONLY RUBBER MOUNTED FLOAT CHAMBERS NEED TO BE REMOVED.

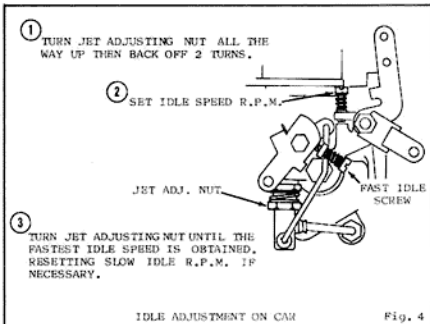
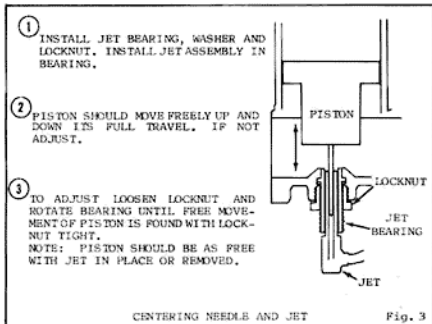
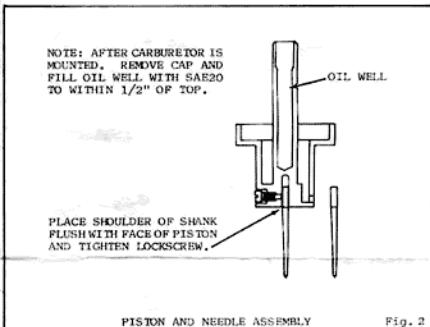
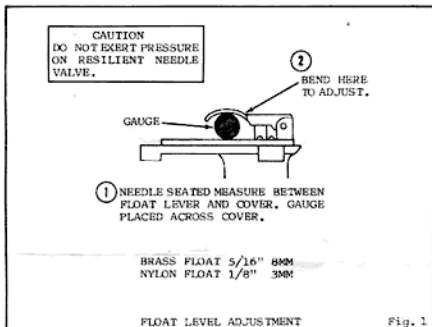
### CLEANING

CLEANING MUST BE DONE WITH CARBURETOR DISASSEMBLED. SOAK PARTS LONG ENOUGH TO SOFTEN AND REMOVE ALL FOREIGN MATERIAL. USE (1) A CARBURETOR CLEANING SOLVENT, (2) LACQUER THINNER OR (3) DENATURED ALCOHOL. MAKE CERTAIN THE THROTTLE BODY IS FREE OF ALL HARD CARBON DEPOSITS. WASH OFF IN SUITABLE SOLVENT. BLOW OUT ALL PASSAGES IN CASTING WITH COMPRESSED AIR AND CHECK CAREFULLY TO INSURE THOROUGH CLEANING OF OBSCURE AREAS.

CAUTION: DO NOT SOAK RUBBER, LEATHER OR PLASTIC PARTS IN SOLVENT.

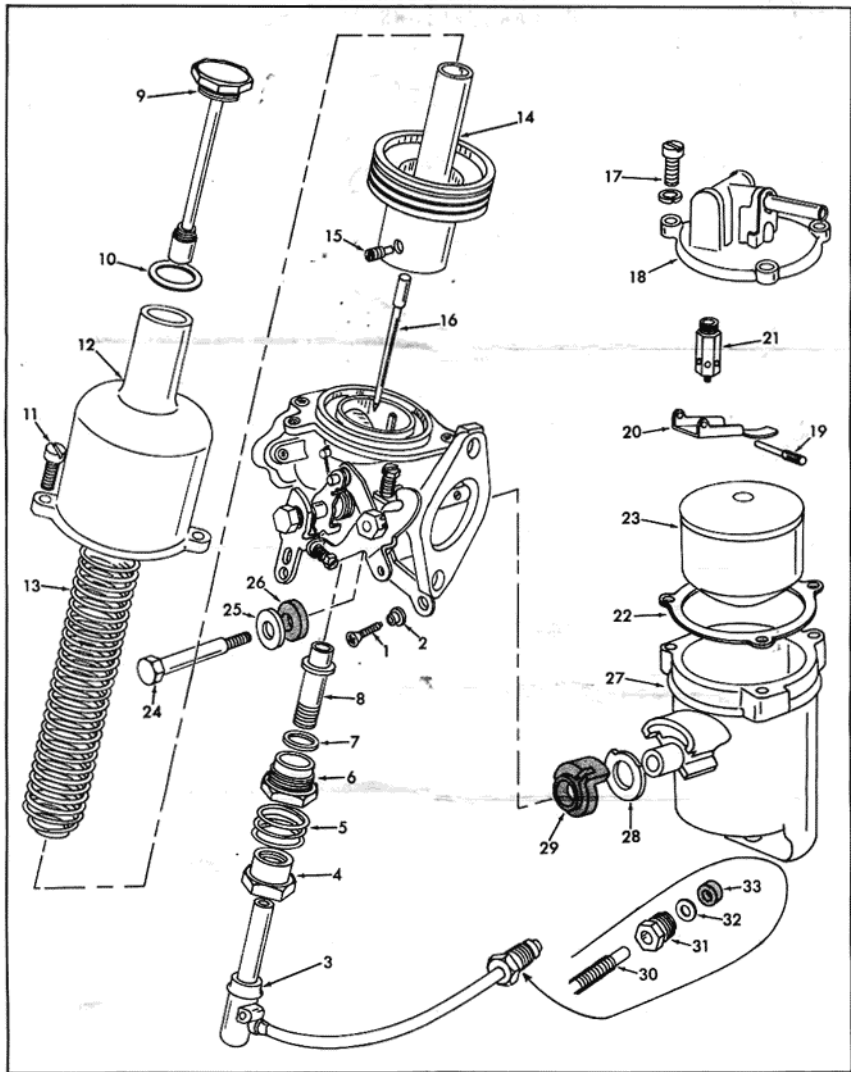
### REASSEMBLY

REASSEMBLE IN REVERSE ORDER OF DISASSEMBLY. NOTE SPECIAL INSTRUCTIONS AND ADJUSTMENTS.



# GENERAL EXPLODED VIEW

THE GENERAL DESIGN AND PARTS SHOWN WILL VARY TO INDIVIDUAL UNITS COVERED ON THIS INSTRUCTION SHEET



## NOMENCLATURE

- |                                |  |   |  |
|--------------------------------|--|---|--|
| 1. SCREW - LINK TO JET         | 11. SCREW - CHAMBER TO BODY (2)                  | 20. LEVER - FLOAT   | 27. FLOAT CHAMBER                            |
| 2. BUSHING - LINK TO JET SCREW | 12. CHAMBER - PISTON                             | 21. NEEDLE & SEAT ASSEMBLY                                | 28. WASHER - SUPPORT                         |
| 3. JET ASSEMBLY                | 13. SPRING - PISTON                              | 22. GASKET-FLOAT CHAMBER COVER                            | 29. GROMMET - RUBBER                         |
| 4. NUT - JET ADJUSTING         | 14. PISTON                                       | 23. FLOAT   | JET TUBE ATTACHING SOME MODELS               |
| 5. SPRING - JET LOCKING        | 15. SCREW - NEEDLE LOCKING                       | REMOVE FOLLOWING PARTS IF FLOAT CHAMBER IS RUBBER MOUNTED | 30. PLASTIC FUEL LINE WITH WIRE SPRING GUARD |
| 6. NET - JET LOCKING           | 16. NEEDLES                                      | 24. BOLT - FLOAT CHAMBER                                  | 31. NUT - FUEL LINE                          |
| 7. WASHER - JET BEARING        | 17. SCREW & LOCKWASHER - FLOAT CHAMBER COVER (3) | 25. WASHER - STEEL  | 32. WASHER - BRASS                           |
| 8. BEARING - JET               | 18. COVER - FLOAT CHAMBER                        | 26. WASHER - RUBBER                                       | 33. WASHER - RUBBER                          |
| 9. CAP & DAMPER ASSEMBLY       | 19. PIN - FLOAT LEVER                            |   |  |
| 10. WASHER - CAP               |  |   |  |