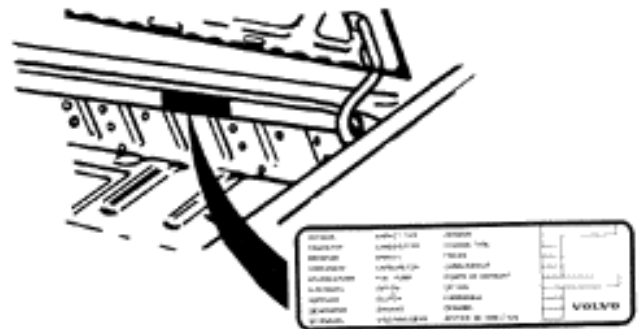
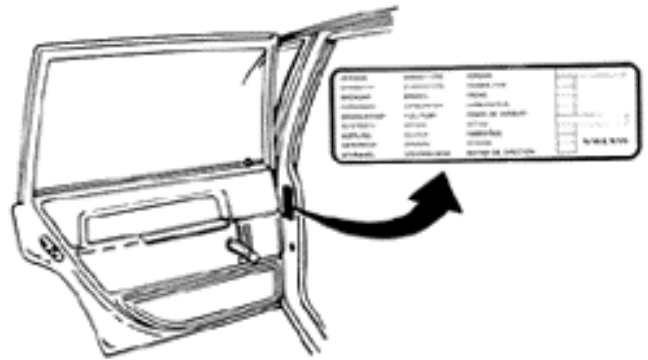


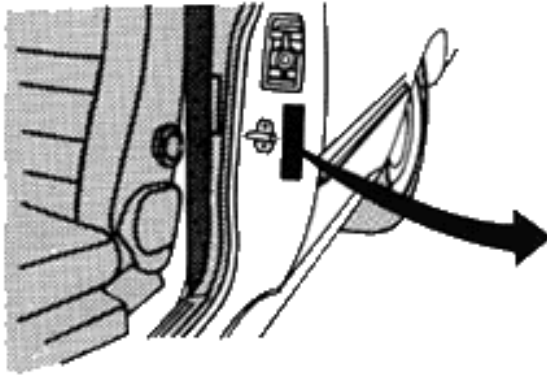
# Using the Service Label to Obtain the Correct Parts

The "Service Label" is attached to the body of every Volvo Sedan and Station Wagon. This label contains codes that identify the vehicle model and the type of body, chassis, engine, brake, fuel pump, clutch, alternator, and steering gear. Sometimes these codes are required by your Volvo Retailer Parts Manager to provide you with the correct Genuine Volvo Parts.

This label is on every Volvo and is located in a variety of places depending upon the year and model. Look for this label on the rear cargo/trunk area, on the door pillar, or inside the engine compartment on either a shock absorber tower or radiator support panel.

The codes assist in the correct identification of parts needed to complete maintenance or a repair. For instance, it is necessary to identify the type of brake calipers on the car to order brake pads. The code "1" or "2" on the Service Label identifies the type of calipers on the car.





Fuse No.	Fuse Rating	Component
1	10A	IGNITION
2	10A	IGNITION
3	10A	IGNITION
4	10A	IGNITION
5	10A	IGNITION
6	10A	IGNITION
7	10A	IGNITION
8	10A	IGNITION
9	10A	IGNITION
10	10A	IGNITION
11	10A	IGNITION
12	10A	IGNITION
13	10A	IGNITION
14	10A	IGNITION
15	10A	IGNITION
16	10A	IGNITION
17	10A	IGNITION
18	10A	IGNITION
19	10A	IGNITION
20	10A	IGNITION
21	10A	IGNITION
22	10A	IGNITION
23	10A	IGNITION
24	10A	IGNITION
25	10A	IGNITION
26	10A	IGNITION
27	10A	IGNITION
28	10A	IGNITION
29	10A	IGNITION
30	10A	IGNITION
31	10A	IGNITION
32	10A	IGNITION
33	10A	IGNITION
34	10A	IGNITION
35	10A	IGNITION
36	10A	IGNITION
37	10A	IGNITION
38	10A	IGNITION
39	10A	IGNITION
40	10A	IGNITION
41	10A	IGNITION
42	10A	IGNITION
43	10A	IGNITION
44	10A	IGNITION
45	10A	IGNITION
46	10A	IGNITION
47	10A	IGNITION
48	10A	IGNITION
49	10A	IGNITION
50	10A	IGNITION
51	10A	IGNITION
52	10A	IGNITION
53	10A	IGNITION
54	10A	IGNITION
55	10A	IGNITION
56	10A	IGNITION
57	10A	IGNITION
58	10A	IGNITION
59	10A	IGNITION
60	10A	IGNITION
61	10A	IGNITION
62	10A	IGNITION
63	10A	IGNITION
64	10A	IGNITION
65	10A	IGNITION
66	10A	IGNITION
67	10A	IGNITION
68	10A	IGNITION
69	10A	IGNITION
70	10A	IGNITION
71	10A	IGNITION
72	10A	IGNITION
73	10A	IGNITION
74	10A	IGNITION
75	10A	IGNITION
76	10A	IGNITION
77	10A	IGNITION
78	10A	IGNITION
79	10A	IGNITION
80	10A	IGNITION
81	10A	IGNITION
82	10A	IGNITION
83	10A	IGNITION
84	10A	IGNITION
85	10A	IGNITION
86	10A	IGNITION
87	10A	IGNITION
88	10A	IGNITION
89	10A	IGNITION
90	10A	IGNITION
91	10A	IGNITION
92	10A	IGNITION
93	10A	IGNITION
94	10A	IGNITION
95	10A	IGNITION
96	10A	IGNITION
97	10A	IGNITION
98	10A	IGNITION
99	10A	IGNITION
100	10A	IGNITION